



BERRYPLANT
RUBUS SPECIALISTS

2024

Quality is our signature

Uncompromising excellence for your blackberry and raspberry plants.

Raspberry and blackberry plants for professional soft fruit growers



With over three decades of experience born in Trentino's heart, Berryplant stands out for its selection of the finest blackberry and raspberry variety for soft fruit growers. Our mission is to provide the best product in terms of technical and genetic quality to help production companies successfully meet the current challenges in the global fruit market.

The strength of 30 years' experience and an unparalleled commitment to quality: we are dedicated to providing plants that meet the diverse needs of our highly specialized clientele, contributing to cost reduction and increased production benefits.



Our varieties

Raspberry



NEW!

Amalia Rossa^{®}**

A primocane variety distinguished by its remarkable vigor and the presence of exceptionally productive laterals. Remarkable picking speed. Fruits are generous in size, conical in shape, and have a light red color, with extended shelf life.

Amalia Rossa proved to be a game-changing variety from the very start. Its combination of high productivity, strong plant vigour, resistance to major raspberry diseases, and consistent fruit size along with quality throughout the picking season, is truly exciting.

Diego Ioriatti - R&D Director & Breeding Chief | Berrytech



Eros^{®}**

Mid-early variety. High branching and high yield plant. Intense red bright color. Very high picking speed.



Optima^{®}**

Strong, vigorous and upright plant. Late primocane with strong potential in floricanne fruiting. Tulameen-like shape and flavor. Suitable for organic production. High picking speed.



Shani^{*ABB}

Very early production, very productive even in low-light conditions, bright fruits and high yield.



Clarita^{®}**

Vigorous plant, suitable for double crop. Premium fruit quality, taste, size and shelf life. Outstanding light red color. High picking speed.

Blackberry



Lochtay*

The most early ripening variety, the best in terms of organoleptic characteristics, the most suitable for fresh consumption.



Lochness

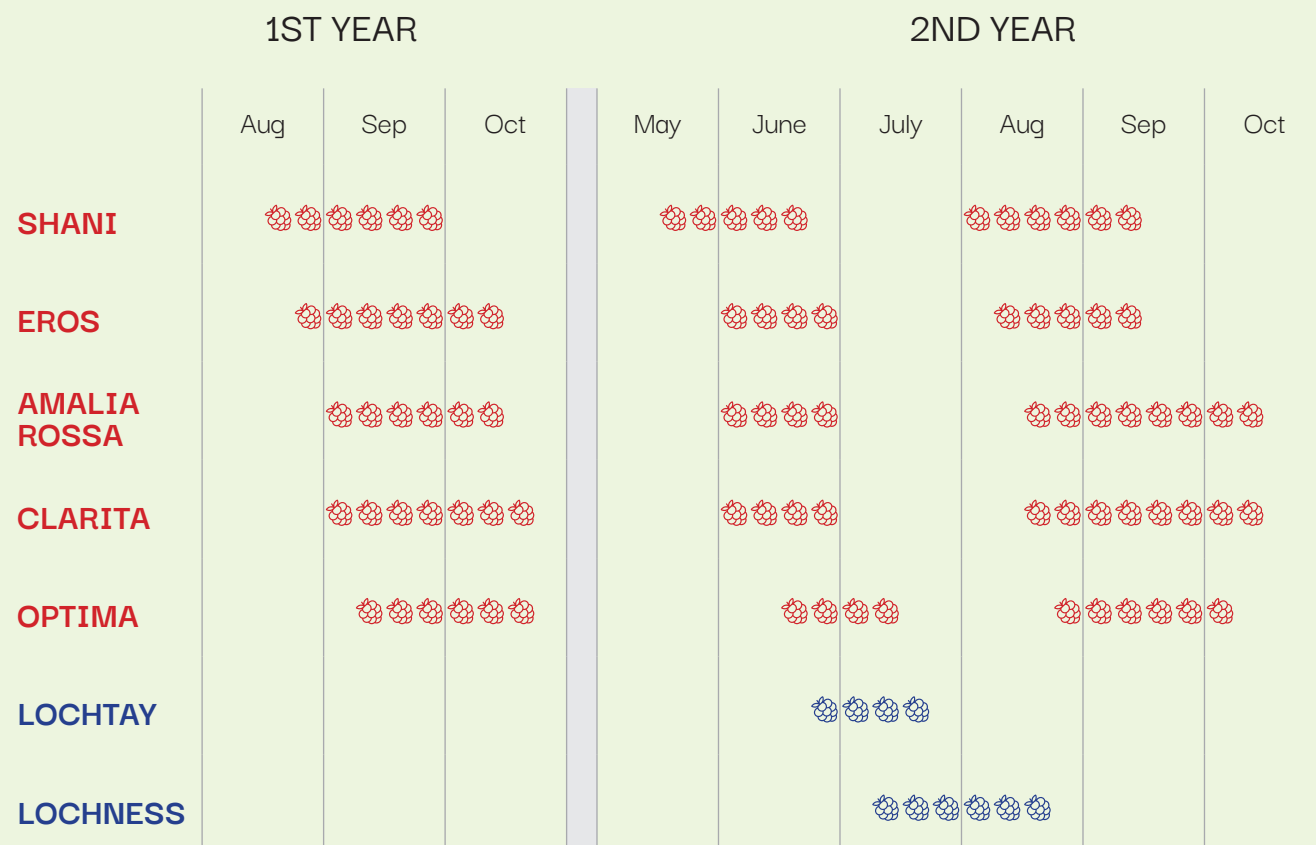
Mid-early ripening season and a excellent production potential, optimal organoleptic qualities and medium/high size.

* Patented variety: availability can change through territories according to licence agreements

** With Non-Propagation Agreement

*ABB Subject to cultivation agreement

Ripening calendar

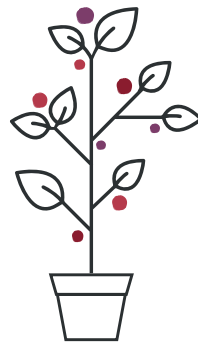


Raspberry plant types



MODULE PLANTS IN TRAY

Fresh plug plant rooted in trays of 84 pieces, available from late February to September. Suitable for professional plantings.



LONG CANES

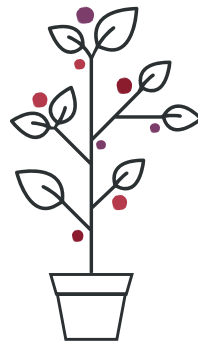
Available from late November to June: in 1.8-liter pots with two canes per pot, or in 2.3-liter pots with three canes. Ideal for scheduled productions.

Blackberry plant types



MODULE PLANTS IN TRAY

Fresh plug plant in a 54-cell tray, ideal for professional plantings. Available from March to June.



LONG CANES

Available from mid-December to July: in 3.5-liter pots with 6/7 canes per pot. Ideal for scheduled productions.

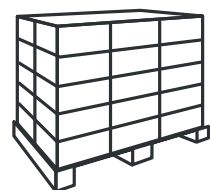
Packaging

TRAY
40 X 60 CM

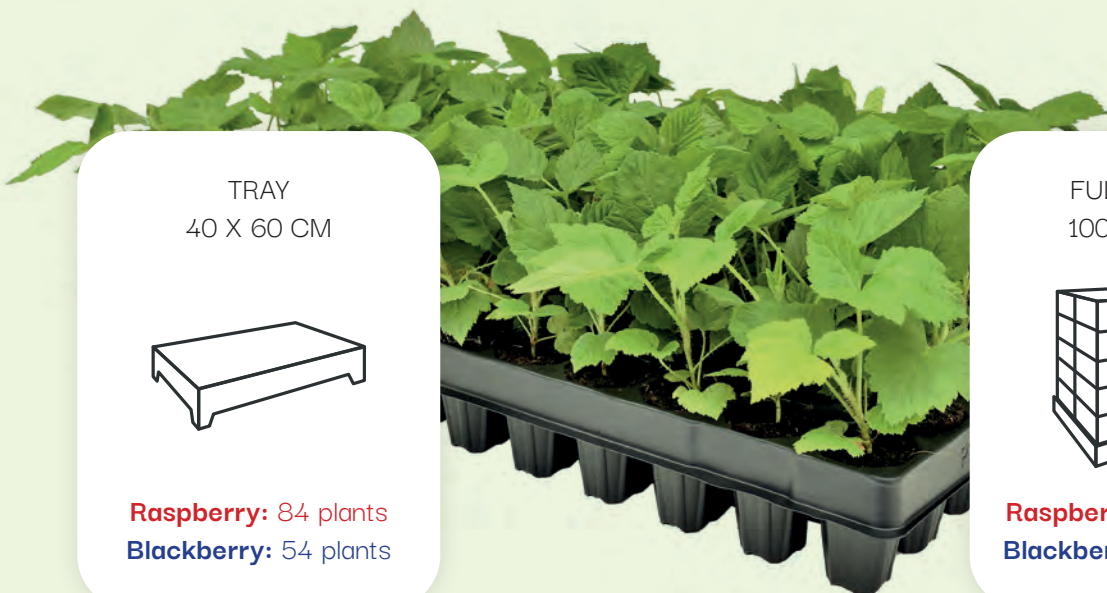


Raspberry: 84 plants
Blackberry: 54 plants

FULL PALLET
100 X 120 CM



Raspberry: 5880 plants
Blackberry: 3780 plants





www.berryplant.com

BERRYPLANT

of Grisenti Maria Maddalena & C.

Società Semplice Agricola

Via delle Meie, 15 - 38042 Baselga di Pinè (TN) - Italy

VAT nr./F.C. 02220150227

T. +39 0461 557405 - F. +39 0461 554942

info@berryplant.it



www.berrytech.it